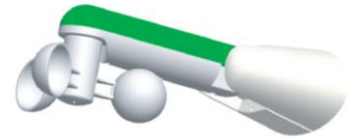


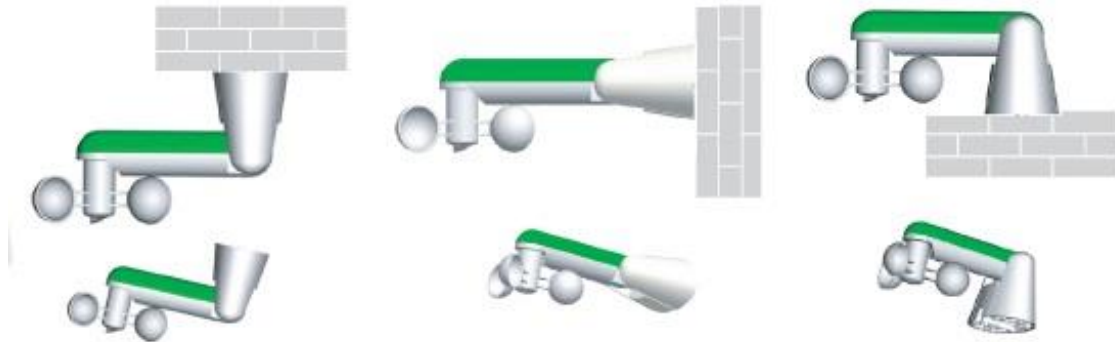
Manual for Wind – Sun sensor

DC116 (J/S) Wind-sun sensor Specification



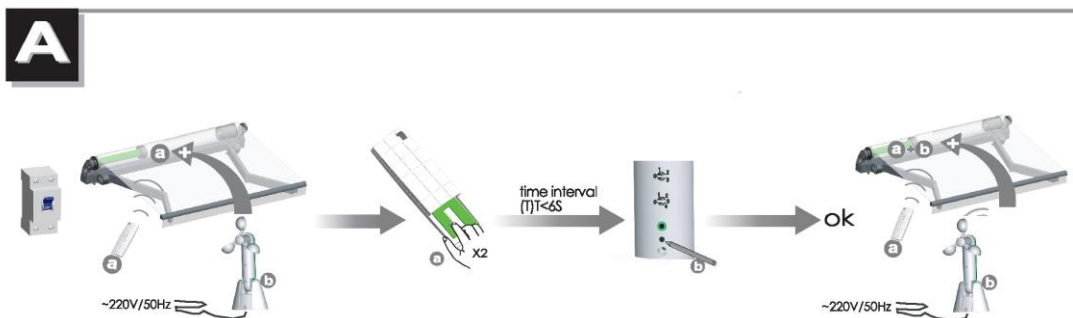
1. Installation

You have to mount the sensor to a spot, which provides good measuring conditions for sunrays and wind. In no case, the sensor shall be mounted in a wind protected area.
Take care mounting the sensor parallel to earth, otherwise the measuring results may be adulterated.
Due to variation of the sun position during daytime, surrounding obstacles e.g. trees, can throw their shadow onto the sensor.
The original power plug must not be cut off.



2. Connecting the sensor

At first, program the remote control to „alternative button configuration“.
(upper button programmed for retraction, refer to the awnings manual)



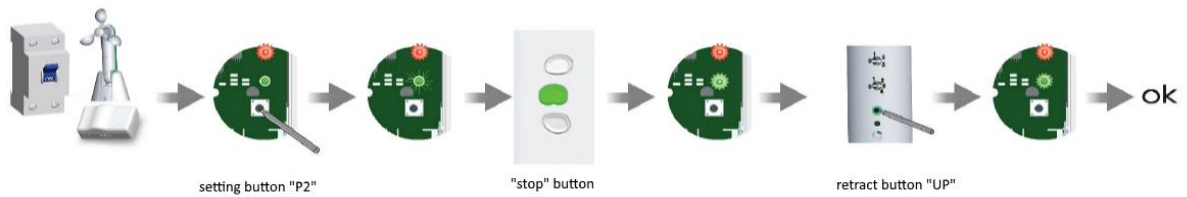
Now connect the Wind- Sun sensor to the awning

The connection must be established with the awning in movement

- At first, extend the awning to full stop at maximum extension
- Retract the awning via the remote control
- Push the „P2“ button on the backside of the remote control twice. (awning in movement)
- Push the „P2“ button on the wind- sun sensor once
- Now adjust your personal settings of the wind- and sun sensitivity via the 2 adjusting screw on the sensor

3. Connecting the sensor to an awning with external control box

If your awning is equipped with an external control box (with or without app control), please use the following connection setup:



- Extend the awning to full stop at maximum extension and remain the power plug connected to the power outlet. Additionally connect the sensors plug to the power outlet.
- Push the „P2“ button at your control box
Advice: if you are using a box with app control, you can find the „P2“ button on the outside of the box
If you are using a box without app control, you have to release the 3 screws on the backside of the box and lift off the lid of the box. Now you can find the “P2” button on the mainboard, located next to the external control buttons
- Push the „stop“ button at the control box
- Push the „UP“ button at the sensor
- Now adjust your personal settings of the wind- and sun sensitivity via the 2 adjusting screw on the sensor

4. Security advice

An automatically controlled awning can start moving unexpected at any time!



The wind- sun sensor is intended to control the awning automatically. Nevertheless, the awning may never be extended when being unobserved.

Make sure, that the area of extension/ retraction is free of obstacles at any time, to avoid damages in the event of automatic moving of the awning. During repair, overhaul or adjustment of the awning, disconnect the power to avoid unintended movement caused by the sensor.

We can't issue any guarantee for damages being caused by inobservance.

Make sure to manually retract the awning at unsuitable weather conditions (e.g. wind, ice, snow etc.)

Damages resulting of false sensor commands are excluded of the manufacturer's guarantee.

General information:

- Wireless
- Frequenzy 433,92 MHz
- Range (outdoor, obstacle free): max. 200 Meter
- AC 230V 50Hz
- Safety code (50 Mio. Codes)
- Wind sensor adjustable in 3 steps
- Sun sensor adjustable in 4 steps
- If the wind speed exceeds the defined limit for at least 3 seconds, the sensor retracts the awning automatically. Once the awning has been retracted, the sensor doesn't measure any wind speed for 1 minute and the awning remains closed.
- If the defined limit for light sensitivity is being exceeded for at least 2 minutes, the awning will be extended automatically. If the sunlight falls below the defined limit for light sensitivity for at least 15 minutes, the awning will be retracted.

Adjustment table for wind – sun sensor

wind speed settings	
1	15 km/h
2	30 km/h
3	45 km/h

legend:

- 1: the awning will be retracted as soon as the wind speed of 15km/h is being exceeded
- 2: the awning will be retracted as soon as the wind speed of 30km/h is being exceeded
- 3: the awning will be retracted as soon as the wind speed of 45km/h is being exceeded

light sensitivity settings	
0	inaktiv
1	15 kLux
2	30 kLux
3	45 kLux
4	60 kLux

legend:

- 0: the awning will not be extended automatically by light
- 1: the awning will be extended as soon as the light exceeds 15kLux
- 2: the awning will be extended as soon as the light exceeds 30kLux
- 3: the awning will be extended as soon as the light exceeds 45kLux
- 4: the awning will be extended as soon as the light exceeds 60kLux

Please make sure, that the sensor is connected to the awning/ motor before using!
Please make sure, that the “UP” button of the sensor will retract the awning when being pushed!

Button setting of the sensor:

